

#9900 Conservatory Dollhouse Kit

Step-by-step assembly instructions

Copyright miniatures.com 2025

SUPPLIES NEEDED:

Masking tape
White glue (such as #1249 Weldbond)
Damp clean cloth
Exterior and interior finishes
Glossy 3/4" wide tape (not gift wrap tape)



GENERAL INSTRUCTIONS

- Identify and inspect all parts using the Parts Diagram.
- Read the directions completely before beginning the project.
- If possible, have a dedicated work area so that you are not unpacking, repacking, and moving the project from place to place.
- Choose a work surface that is level, clean, dry, and protected from spills.
- Do a dry fit, using masking tape to hold parts in place, to make sure everything fits together correctly before assembling permanently.

Tips: Plan the finishes for the interior and exterior at the dry-fit stage, before final/permanent assembly. It is easier to finish the panels as flat surfaces. Disassemble and finish as desired, then reassemble using glue.

Before painting, staining or otherwise finishing the walls, remove the windows from their wall openings and the muntins and acrylic from both doors. The muntins are held in place by tension and small pieces of tape. Gently push the acrylic up and out of the wooden door frames; the top of the frame will come loose.

Assembly Instructions

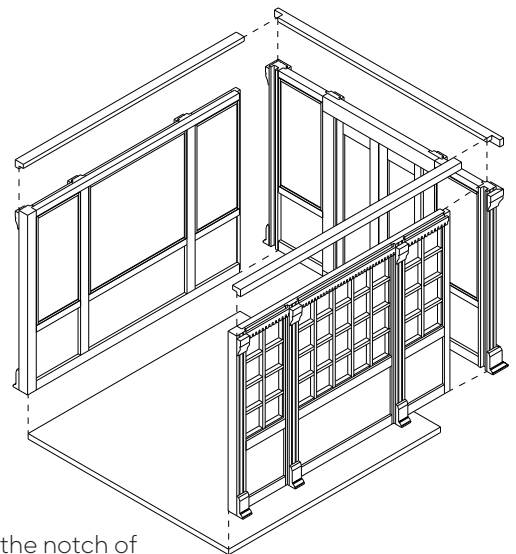
Walls

Parts you will need in this section:

- Floor
- Front Wall
- Left Side Wall
- Right Side Wall
- Front Wall Cap
- Side Wall Cap (2)
- Window Acrylic Small (6)
- Window Acrylic Large (2)

1. Glue the **Side Walls** to the **Front Wall**.
 - Orient the walls so that their detailed trim is facing out and their plain trim is facing in.
 - The grooves on the **Front Wall** receive the tabs of the **Side Walls**.
2. Glue the **Floor** in place.
 - It slides into the space between the **Side Walls** and against the **Front Wall**. It rests on the work surface and touches the inside surfaces of the walls.
3. Glue the **Front Wall Cap** to the top of the **Front Wall**.
 - Orient it so that its notches face towards the back. It is flush with the trim and corners of the wall.

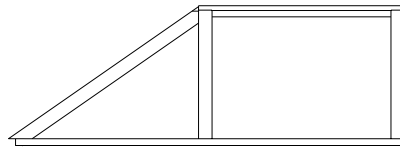
4. Glue both **Side Wall Caps** to the tops of the **Side Walls**.
 - They meet the notch of the **Front Wall Cap** and are flush at the back edge and along the trim of the wall.
5. Square the assembly and let dry.
6. Add acrylic to the windows and return the windows into their openings. Return the acrylic and muntins into the door frames.



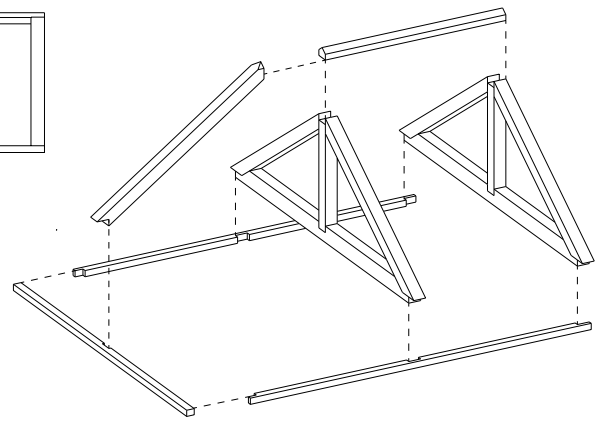
Roof Rafters

Parts you will need in this section:

- Ridge Beam
- Roof Truss (2)
- Side Support (2)
- Front Support
- Center Front Rafter



1. Glue the **Ridge Beam** to both **Roof Trusses**.
 - It fits flush into the top notch of each triangular truss.
2. Orient the assembly so that the triangles face forward and the roof line slopes to the left and right.
3. Glue a **Side Support** to the left side of the truss assembly.
 - The center notch on the **Side Support** is off set such that one side is longer than the other. Place the longer side between the trusses.
 - Orient all the notches of the **Side Support** so that they face inwards towards the trusses.
 - The trusses fit into the notches while resting on top of and overhanging the **Side Supports**.
4. Repeat on the right.
5. Glue the **Front Support** to the assembly.
 - The **Front Support** meets the notches on the ends of the **Side Supports**.
 - Orient its center notch so that it faces inwards towards the trusses.

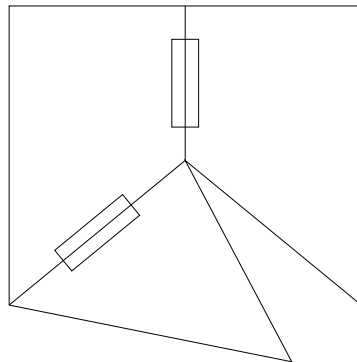


6. Glue the **Center Front Rafter** to the **Front Support** and against the **Ridge Beam**.
 - It rests into and overhangs the center notch of the **Front Support** and rests against the top of the beam to finish the roof ridge.
7. Square the assembly and let dry.
8. Place this rafter assembly onto the wall assembly. The rafters' **Side Supports** rest on the walls' **Side Wall Caps**.

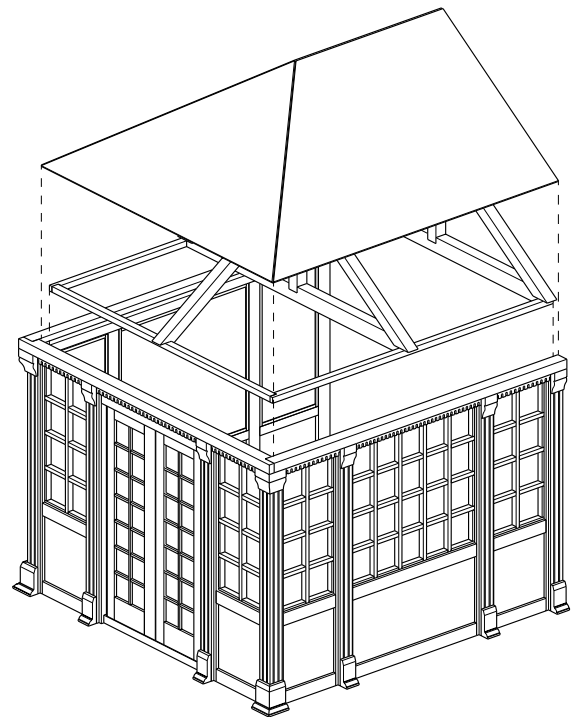
Roof Acrylic

Parts you will need in this section:

- Roof Acrylic Trapezoid (2)
- Roof Acrylic Triangle



1. Clean your work surface. Then remove the protective paper coating from the three roof acrylic pieces.
2. Orient the three pieces as shown in the drawing.
3. Push the two trapezoid shapes together so that they touch along their shortest parallel sides and are perfectly aligned. Add tape along this joint.
4. Push the triangle shape into the triangular opening just formed by the two trapezoid shapes. Push it against one angled side of the assembly. Add tape along the length of this new joint.
5. Close the remaining gap by lifting the pieces and bringing them together. Assure that all tape is on the inside or underside of the roof assembly that is forming. Add tape along the length of this last joint on the inside/underside.



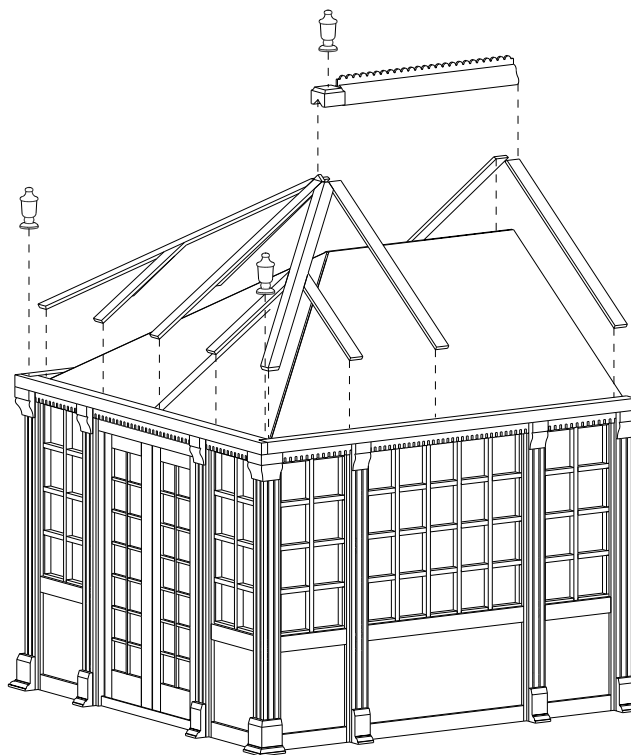
6. Orient the roof assembly so that the triangle is facing forward; the triangle identifies the front.
7. Add dots of glue along the three joints from the outside to secure these joints.
8. Place this acrylic assembly onto the walls and rafter assembly.

Roof Trim

Parts you will need in this section:

- Ridge Cap
- Ridge Junction Block
- Hip Ridge Cap (2)
- Short Roof Trim (4)
- Long Roof Trim (7)
- Finial (3)

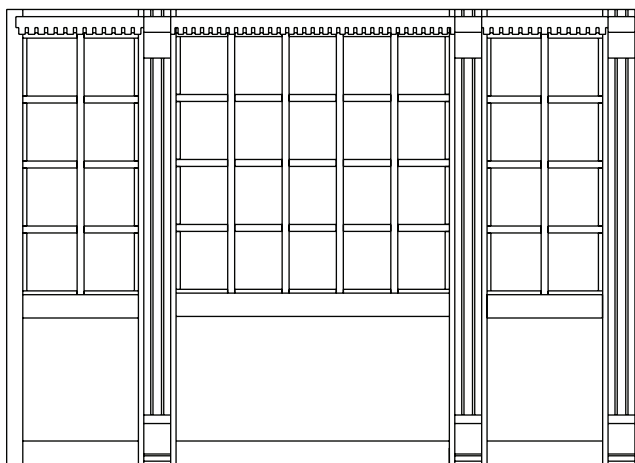
1. Glue the **Ridge Cap** along the top ridge and flush at the back edge of the acrylic roof assembly.
2. Glue the **Ridge Junction Block** in front of the **Ridge Cap**.
3. Glue both **Hip Ridge Caps** against the front corners of the **Ridge Junction Block** and down along the left and right joints of the acrylic roof assembly.
 - Orient their notch up towards the block and their pointed end down towards the walls.
4. Glue the **Short Roof Trim** against the **Hip Ridge Caps**.
 - Place and angle them so that their mitered ends make seamless joints with the caps and their other ends finish at the edge of the acrylic.
5. Align and glue the **Long Roof Trim** over the **Trusses** and evenly spaced between them.
 - Notice that both ends of the trim are beveled to fit under the **Ridge Cap** and on top of the rafter's **Side Wall Caps**.
6. Add the **Finials** to the top of the **Ridge Junction Block** and to the front top left and right corners of the Conservatory.
7. Let dry.



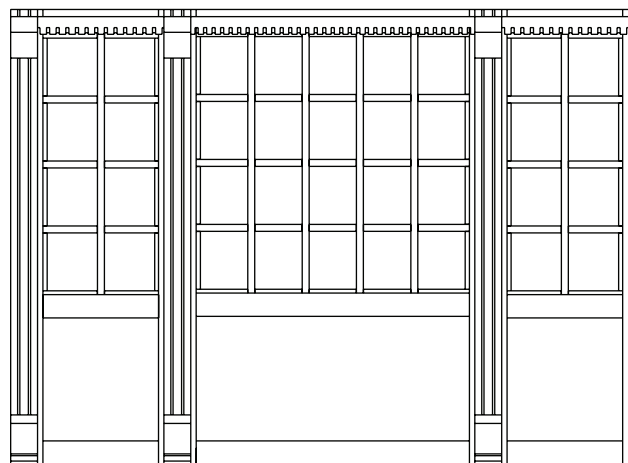
Assembly of the Conservatory is now complete.

Parts Diagram

Note: Not to scale



Right Side Wall



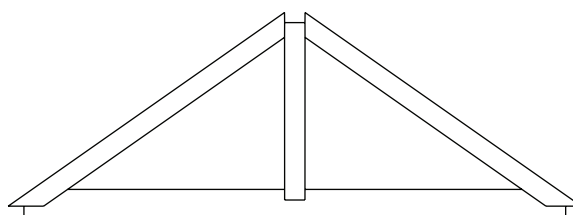
Left Side Wall



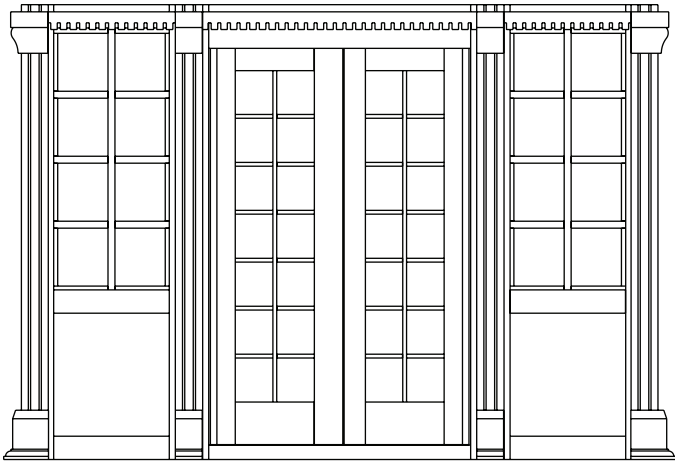
Window Acrylic
Large (2)



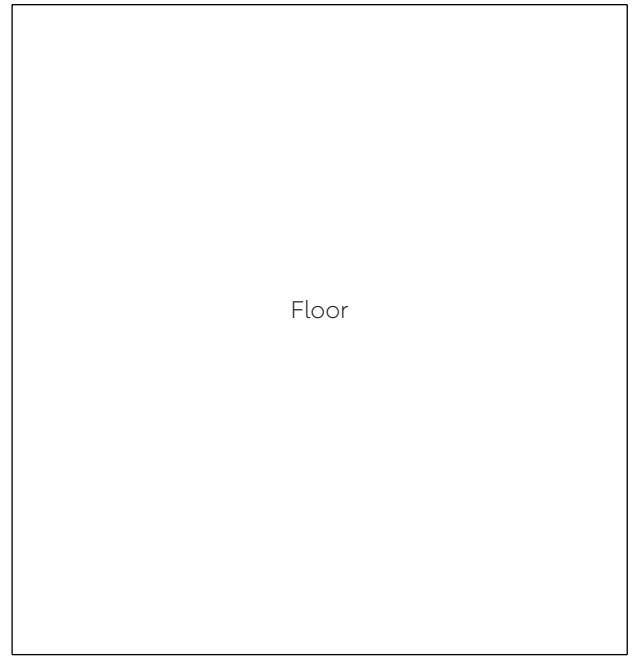
Window
Acrylic
Small
(6)



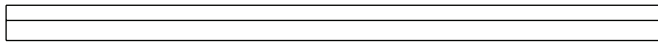
Roof Truss (2)



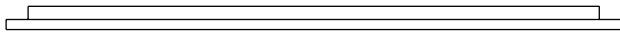
Front Wall



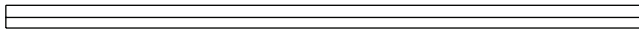
Floor



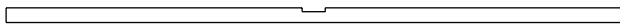
Ridge Beam



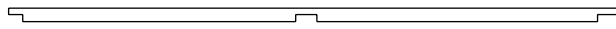
Front Wall Cap



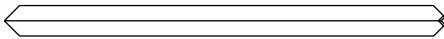
Side Wall Cap (2)



Front Support



Side Support (2)



Hip Ridge Cap (2)



Long Roof Trim (7)



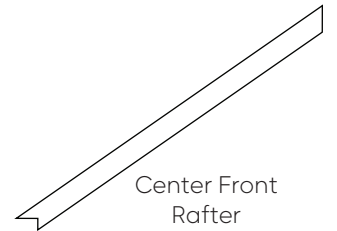
Short Roof Trim (4)



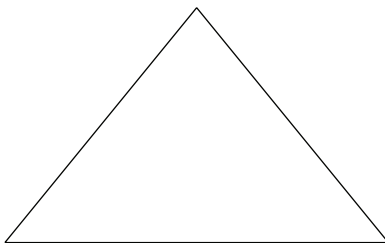
Finial (3)



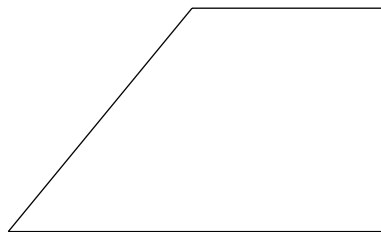
Ridge Junction Block



Center Front Rafter



Roof Acrylic Triangle



Roof Acrylic Trapezoid (2)